



PREFORMED NICHES

INSTALLATION GUIDE



Challenge

Luxurious bathrooms have long been a residential trend, and now larger commercial spaces are also interested in achieving this same look. Hotels, gyms and senior living centers are blending form and function, combining a shower's necessary utility with the look and feel of a spa.

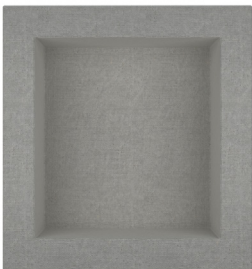
Although your customers want luxurious spaces, they probably do not want to pay a premium—particularly in multi-unit buildings. As a contractor, you must balance the costs of time and materials with aesthetics to create spa-like retreats for your clients. On large-scale jobs, achieving a custom look *consistently* can present challenges. Contractors may spend hours measuring and cutting material to achieve a consistent appearance and performance.

Solution:

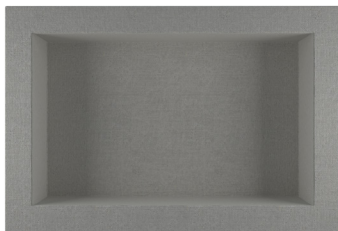
TEC® Preformed Components allow you to create beautiful spa-like spaces, without sacrificing profitability and efficiency. The TEC® preformed waterproof niches are ideal for showers, pools, other wet areas, and even kitchens. They add a decorative, recessed element to showers and are both beautiful and functional, offering additional storage space and a high-end look. A consistent, preformed design makes them ideal for multi-unit facility construction, custom home building or remodeling.

Available in five different sizes and designs, the TEC® preformed niches allow you to deliver your clients' visions efficiently. They are ready to use and easy to install. Because they are composed of one piece, you can simply cut, place and fasten the niches into the wall. Then, you can tile the niches with the same tile as the surrounding walls for a uniform aesthetic. This simple process can be repeated quickly over multiple units.

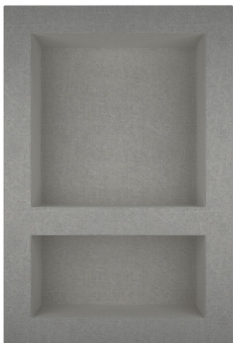
PF-301



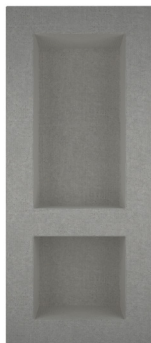
PF-306



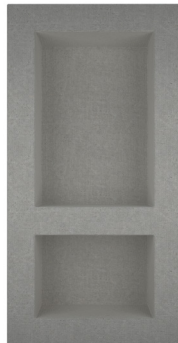
PF-304



PF-305



PF-309



TEC® Preformed Components are coated with a waterproofing membrane to protect against mold and mildew, which meets ANSI A118.10 and has IAPMO approval.

Implementation:

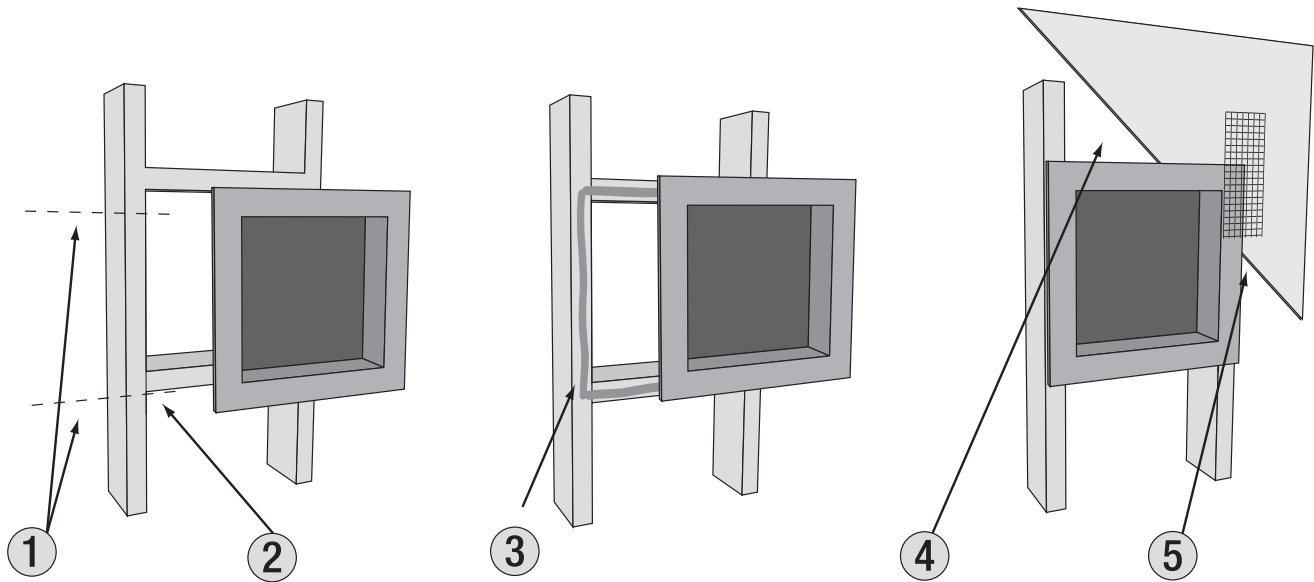
Pre-Installation:

Prior to installation, consider the size and location of your niche. This is especially important if you will be installing many niches in a multi-unit building. For efficiency, you'll want the location and size to be as standardized as possible. Do a dry layout of tile and bullnose tile in a TEC® Preformed Component prior to installation. The dry layout informs the type of cuts you'll need to make.

Because the TEC® niches are already coated with a waterproofing membrane you do not have to waterproof the niches prior to installation.

TEC® preformed niches are coated with an IAPMO approved, waterproof membrane that meets ANSI A118.10.

Niches Installation: New Construction



1) Place the niche on the part of the wall where you will eventually install it. Mark the location of the top and bottom of the flange – or the “frame” of the niche – between two studs with a pencil. Studs are typically located 16” on center.

2) If desired, nail two horizontal braces between the vertical studs for additional stability. The braces will go on the top and the bottom of the niche. This step is not required and depends on your and your customer’s preference. TEC® Preformed Components have adequate stability without additional studs.

3) Fill between the niche and the cross-bracing studs with a TEC® IAPMO approved waterproofing membrane, such as [TEC® HydraFlex™](#). Be sure that there are no voids between the niche and the studs.

4) Install cement backer board around and abut it to the niche. You can cut an opening the size of the niche into the backer board and apply the backer board to the wall that surrounds the niche.

5) Use TEC® HydraFlex™ to cover the joint between the cement backer board and the niche. Be sure to embed all of the [fiberglass mesh](#) in the waterproof membrane. In the event that you are installing the niche in a location where it will not be exposed to water – like a kitchen or pantry – you can use a latex-modified thinset mortar, such as [TEC® 3N1® Performance Mortar](#), rather than a waterproofing membrane. You can also modify an unmodified mortar with [TEC® XtraFlex™ Acrylic Latex Additive](#).

6) After the niche is installed, tile it just like you would tile any other surface. Tile the wall up to and around the niche first.

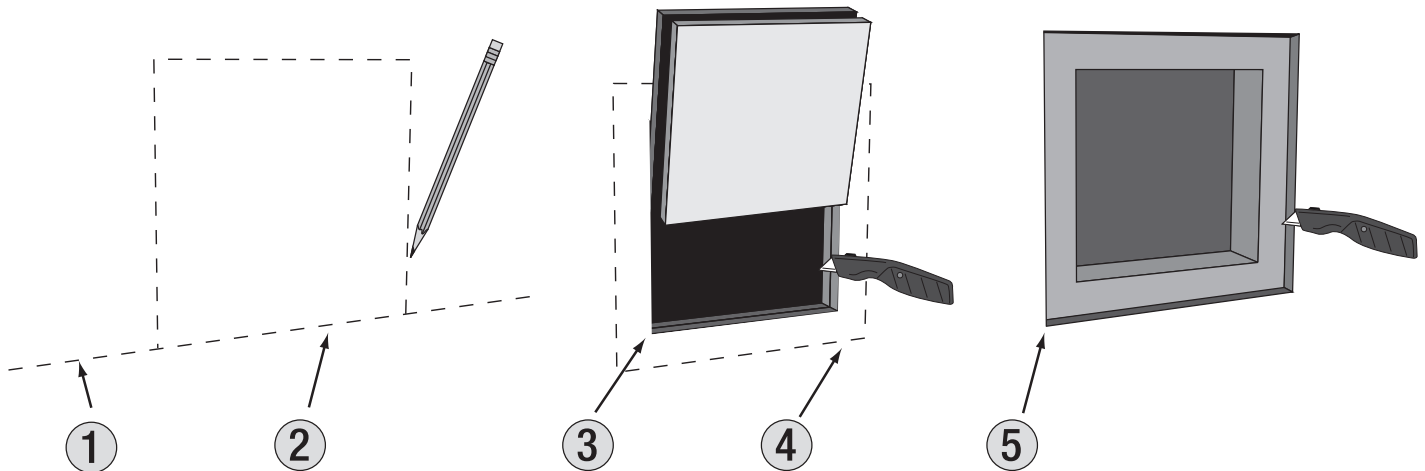
Then, cut and lay bullnose tile along the edges of the niche, aligning it with existing grout lines. You may want to tape tile along the edges in place while you continue tiling the rest of the niche. Lay out the tile design on the back of the niche so that it fits seamlessly into the rest of the tile design.

Like any wet area, use a grout that is mold and mildew resistant and does not require sealing. **TEC® Design FX™ Grout** fits this description, and is available in three metallic, sparkling colors. **Power Grout®** also offers color consistency and excellent performance in wet conditions. Use 100% silicone caulk, like **TEC® AccuColor 100® 100% Silicone Sealant**, to caulk all corners and changes of plane.

Niches Installation: One Substrate Layer

- 1) Draw a horizontal level pencil line on the outside substrate layer at the height that you desire to place the niche. This line will serve as a signpost for your installation. The bottom of your niche will eventually be aligned with it.
- 2) Place the niche so its bottom lip is centered on the pencil line drawn in step 1.
- 3) Trace the exterior flanges with a pencil. Cut along the pencil line using a drywall saw. Carefully remove the cut out substrate panel. Note that sawing will produce a lot of dust, so proceed with caution.
- 4) Fill between cross bracing studs and the niche using a TEC® IAPMO approved waterproofing membrane, such as TEC® HydraFlex™ and a TEC® latex modified thinset mortar like TEC® 3N1® Performance Mortar. Follow steps 5 and 6 as outlined above.

Niches Installation: Two Substrate Layers

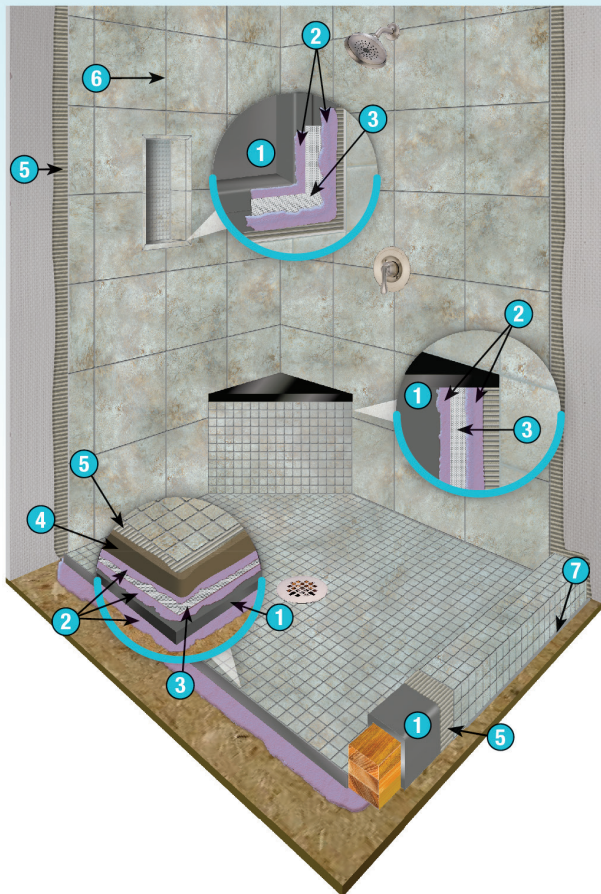
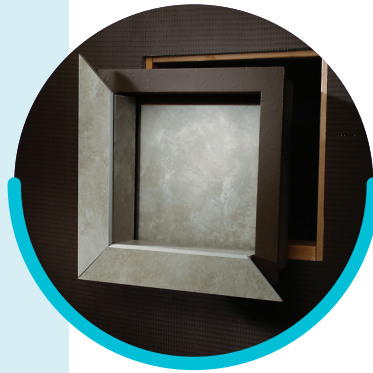


- 1) Draw a horizontal level pencil line on the outside substrate layer.
- 2) Place the bottom of the niche centered on the line and trace the outline of its back.
- 3) Cut through both substrate layers along the traced line using a dry wall saw and remove them.
- 4) Place the niche into the formed opening. The flange should stick out around the opening created in step 2. Trace the exterior flange.
- 5) Remove the niche from the opening. Then, cut through the outside substrate only, and remove the “picture frame” shaped panel that your cuts create.
- 6) Set the niche in place using a TEC® IAPMO approved waterproofing membrane, such as

HydraFlex™ or, in the case of installations in dry environments, TEC® 3N1® Performance Mortar. Follow steps 5 and 6 as outlined above.

Shower Design Cutaway, Showing Preformed Components

- 1 TEC® Preformed Components
- 2 HydraFlex™ Waterproofing Crack Isolation Membrane
- 3 TEC® Waterproofing Mesh
- 4 TEC® XtraFlex™ Acrylic Latex Additive mixed in mortar bed made according to ANSI A108.1B
- 5 TEC® Latex Modified Thinset Mortar
- 6 TEC® Grout
- 7 TEC® AccuColor 100® 100% Silicone Sealant



Full System:

When used along with TEC® tile installation products, preformed components allow you to add a design element that fits with today's building trends, backed with a limited system warranty*, for peace of mind. Using TEC® HydraFlex™ waterproofing membrane will allow you to complete installations quickly. TEC® HydraFlex™ is ready for tile installation in just two to three hours after application. You can combine it with a fast-drying, latex-modified thinset TEC® mortar, like TEC® Fast Set 3N1®, and a ready-to-use grout, like TEC® Design FX®, to maximize efficiency for multi-unit jobs. In all installations, allow the mortar and/or waterproofing to dry to the touch before installing tile/stucco or other surface materials.

The TEC® line of Preformed Components also includes slopes, curbs and shower seats. With TEC® Preformed Components, you can efficiently create luxury bathrooms for individual homeowners or large-scale commercial spaces.

When TEC® Preformed Components are used with the TEC® system, a limited system warranty* is available.

*For detailed product information view the product data sheet on tecspecialty.com; for warranty details see your sales associate or tecspecialty.com